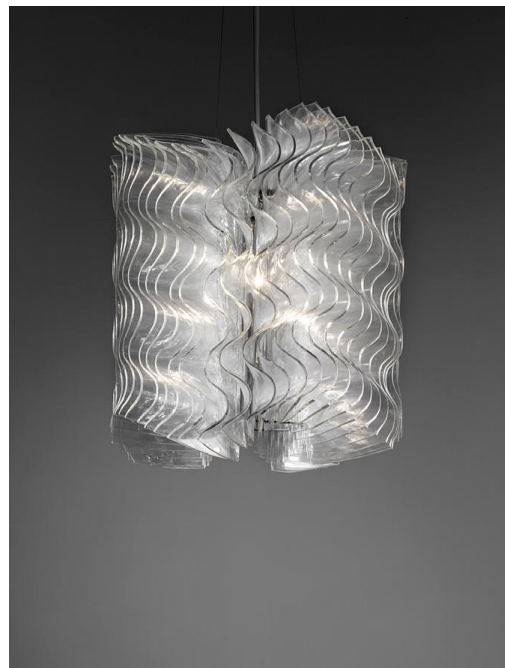


**DESIGNER: Maurizio Galante**

**YEAR OF DESIGN: 2013**

**Glass: Clear Fused Glass**

This chandelier translates the elements of couture and the softness of fabric — the way it ripples and folds — into 'plisse cloud'. The name indicates the designer's use of the plissé puckered technique applied in treating various fabrics, in which he has translated this way of pleating textiles to glass. The individual transparent elements are arranged to rotate around a central axis, the material exhibiting a wave motif to form the organic structures



*TECHNICAL DETAIL PLISSE S*

<b>Type</b>	<b>CE</b>	<b>UL</b>
<i>Light source</i>	<i>1x led e27, nt, 2500k 480 lm cri 95 Dimmable</i>	<i>1x led e26, nt, 2500k 480 lm Cri 95 dimmable</i>
<i>Input voltage</i>	<i>240v/50hz</i>	<i>120v/60hz</i>
<i>Rated Power</i>	<i>6w</i>	<i>6w</i>
<i>Surface finish</i>	<i>Polished st.steel</i>	
<i>Cabel length</i>	<i>3000mm/118 1/8"</i>	
<i>Canopy color</i>	<i>Lacquered white glossy</i>	
<i>Prot.rating</i>	<i>IP 20</i>	
<i>Safety class</i>	<i>CLASS I</i>	



*TECHNICAL DETAIL PLISSE L*

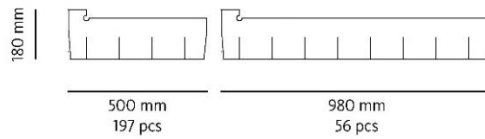
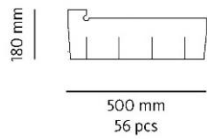
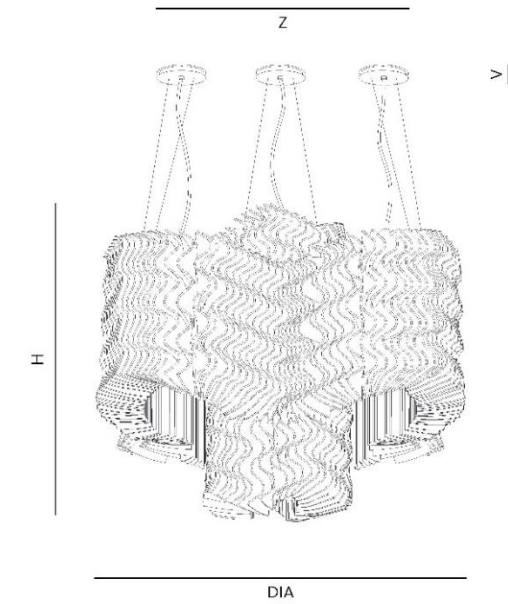
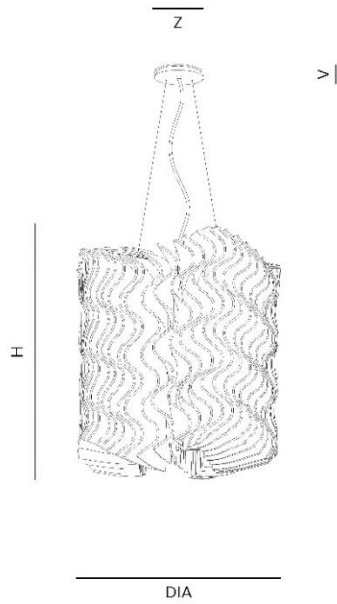
<b>Type</b>	<b>CE</b>	<b>UL</b>
<i>Light source</i>	<i>5x led e27, nt, 2500k 480 lm cri 95 Dimmable</i>	<i>5x led e26, nt, 2500k 480 lm Cri 95 dimmable</i>
<i>Input voltage</i>	<i>240v/50hz</i>	<i>120v/60hz</i>
<i>Rated Power</i>	<i>6w</i>	<i>6w</i>
<i>Surface finish</i>	<i>Polished st.steel</i>	
<i>Cabel length</i>	<i>3000mm/118 1/8"</i>	
<i>Canopy color</i>	<i>Lacquered white glossy</i>	
<i>Prot.rating</i>	<i>IP 20</i>	
<i>Safety class</i>	<i>CLASS I</i>	



**LASVIT Technical Sheet**  
**PLISSE CLOUD LIGHTING SCULPTURE**  
**TECHNICAL DRAWING**

**Plisse cloud S**

**Plisse cloud L**



Name	Dia (mm/inch)	H / +L (mm/inch)	Z (mm/inch)	V (mm/inch)
<b>Plisse cloud S</b>	500/19 <sup>1</sup> / <sub>16</sub> "	535/21 <sup>1</sup> / <sub>16</sub> "	140/5 <sup>1</sup> / <sub>2</sub> "	30/1 <sup>3</sup> / <sub>16</sub> "
<b>Plisse cloud L</b>	1340/52 <sup>3</sup> / <sub>4</sub> "	1035/40 <sup>3</sup> / <sub>4</sub> "	5 × 140/5 <sup>1</sup> / <sub>2</sub> "	5 × 30/1 <sup>3</sup> / <sub>16</sub> "