

DATASHEET

Name:
Type:
Designed by:

PURO SOLO
Pendant Light
Lucie Koldova



DESCRIPTION

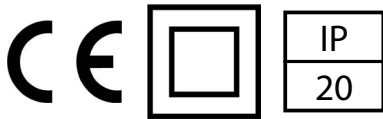
Puro is a boldly minimalistic variation on the atmospheric pendent light. Inspiration for the collection and its name comes from the Spanish word for cigar 'puro', which also alludes to the clean lines of the composition.

TECH. DESCRIPTION

The light comprises a glass tube, LED source, and dural end caps for a compact visage. The assembly is attached to the ceiling canopy by means of the power cord fitted with a Brokis connector.



CERTIFICATES



Product ID: PC1155

Puro Solo Vertical 400

kg
Glass, metal
2,200 mm
Ceiling
Indoor

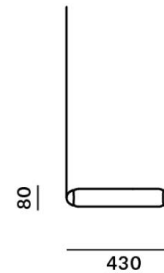
CONSTRUCTION SPECIFICATIONS

Weight:
Construction material:
Cord Length:
Mounting:
Environment:

ELECTRICAL SPECIFICATIONS

Input voltage [V]:
Frequency [Hz]:
Max. power [W]:
Coverage IP:
Socket:
Light source:
Energy class:

100 - 240 V
50-60 Hz
7.5 W
20
-
non-user replaceable LED module
A+



Product ID: PC1156

Puro Solo Horizontal 400

kg
Glass, metal, leather
2,200 mm
Ceiling
Indoor

100 - 240 V
50-60 Hz
7.5 W
20
-
non-user replaceable LED module
A+



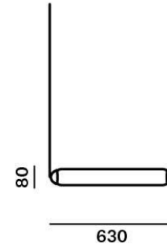
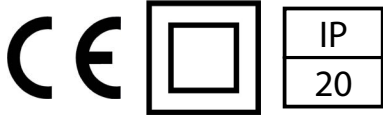
DATASHEET

Name:
Type:
Designed by:

PURO SOLO
Pendant Light
Lucie Koldova



CERTIFICATES



Product ID: PC1122

Product ID: PC1125

CONSTRUCTION SPECIFICATIONS

Weight:
Construction material:
Cord Length:
Mounting:
Environment:

Puro Solo Vertical 600

3.2 kg
Glass, metal
2,000 mm
Ceiling
Indoor

Puro Solo Horizontal 600

3.2 kg
Glass, metal
2,000 mm
Ceiling
Indoor

ELECTRICAL SPECIFICATIONS

Input voltage [V]:
Frequency [Hz]:
Max. power [W]:
Coverage IP:
Socket:
Light source:
Energy class:

100 - 240 V
50-60 Hz
10 W
20
-
non-user replaceable LED module
A+

100 - 240 V
50-60 Hz
15 W
20
-
non-user replaceable LED module
A+

LED SOURCE - PURO SOLO 600

Socket -
Type LED module
Lamp wattage [W] 10 W
Input voltage [V] 24 VDC
Energy class A+
Flux [lm] 730 lm
Light colour [K] 2700K
CRI 80+
Lifespan [h] 20,000 hr
Dimmable yes
Dimensions h x w [mm] -



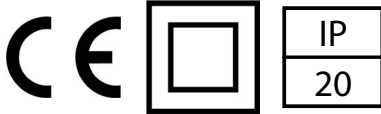
DATASHEET

Name:
Type:
Designed by:

PURO SOLO
Pendant Light
Lucie Koldova



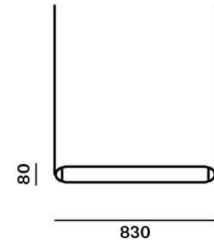
CERTIFICATES



Product ID: PC1123

Puro Solo Vertical 800

3.7 kg
Glass, metal
2,000 mm
Ceiling
Indoor



Product ID: PC1126

Puro Solo Horizontal 800

3.7 kg
Glass, metal
2,000 mm
Ceiling
Indoor

CONSTRUCTION SPECIFICATIONS

Weight:
Construction material:
Cord Length:
Mounting:
Environment:

ELECTRICAL SPECIFICATIONS

Input voltage [V]: 100 - 240 V
Frequency [Hz]: 50-60 Hz
Max. power [W]: 15 W
Coverage IP: 20
Socket: -
Light source: non-user replaceable LED module
Energy class: A+

100 - 240 V
50-60 Hz
15 W
20
-
non-user replaceable LED module
A+

LED SOURCE - PURO SOLO 800

Socket: -
Type: LED module
Lamp wattage [W]: 15 W
Input voltage [V]: 24 VDC
Energy class: A+
Flux [lm]: 1,100 lm
Light colour [K]: 2700K
CRI: 80+
Lifespan [h]: 20,000 hr
Dimmable: yes
Dimensions h x w [mm]: -



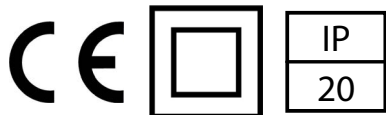
DATASHEET

Name:
Type:
Designed by:

PURO SOLO
Pendant Light
Lucie Koldova



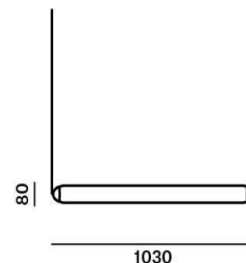
CERTIFICATES



Product ID: PC1124

Puro Solo Vertical 1000

4.9 kg
Glass, metal
2,000 mm
Ceiling
Indoor



Product ID: PC1127

Puro Solo Horizontal 1000

4.9 kg
Glass, metal
2,000 mm
Ceiling
Indoor

CONSTRUCTION SPECIFICATIONS

Weight:
Construction material:
Cord Length:
Mounting:
Environment:

ELECTRICAL SPECIFICATIONS

Input voltage [V]: 100 - 240 V
Frequency [Hz]: 50-60 Hz
Max. power [W]: 20 W
Coverage IP: 20
Socket: -
Light source: non-user replaceable LED module
Energy class: A+

100 - 240 V
50-60 Hz
20 W
20
-
non-user replaceable LED module
A+

LED SOURCE - PURO SOLO 1000

Socket: -
Type: LED module
Lamp wattage [W]: 20 W
Input voltage [V]: 24 VDC
Energy class: A+
Flux [lm]: 1,460 lm
Light colour [K]: 2700K
CRI: 80+
Lifespan [h]: 20,000 hr
Dimmable: yes
Dimensions h x w [mm]: -



DATASHEET

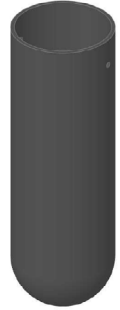
Name:
Type:
Designed by:

PURO SOLO
Pendant Light
Lucie Koldova



CEILING CANOPY

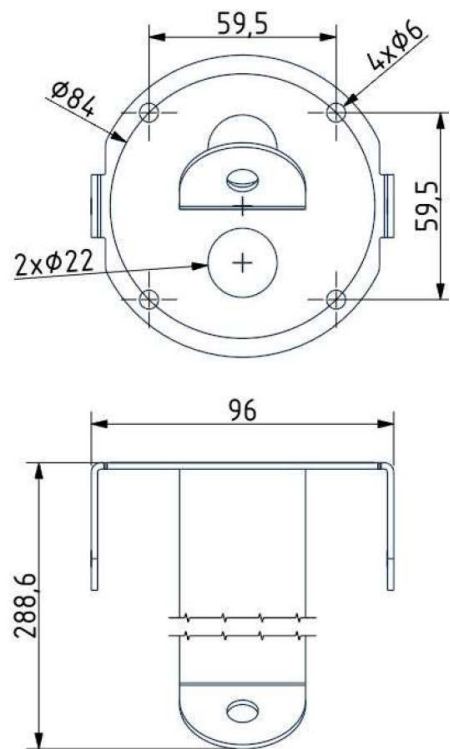
Dimensions \varnothing x w [in/mm] 4.33" x 13" / 110 x 330 mm
Weight [kg] 1.3 kg
Material glass



Drawing



Canopy bracket



DATASHEET

Name:
Type:
Designed by:

PURO SOLO
Pendant Light
Lucie Koldova



PRODUCT DETAILS

Glass Colour

Triplex opal	A	CGC39
Dark grey-opaline	B	CGC1507

Glass Surface

Acid-etched both side surface	A	CGSU881
-------------------------------	---	---------

Body Finish

Metal - black matte powder coating	A	CCS846
Metal - white matte powder coating	A	CCS845

Canopy finish

Glass - black	A	CCSC2404
Glass - white	A	CCSC2403
Trimless - cable version - white structure	A	CCSC2903
Trimless - cable version - black structure	A	CCSC2904

Cable colour

Textile cable - Black	A	CECL519
Textile cable - white	A	CECL521

LED Source

600mm, 24V, LED, 13W, 2700K, 1105lm, RA90, DIM	A	LEDS1926
600mm, 24V, LED, 13W, 4000K, 1220lm, RA90, DIM	A	LEDS1927
600mm, 24V, LED, 13W, 5000K, 1300lm, RA90, DIM	A	LEDS1928
800mm, 24V, LED, 18W, 2700K, 1530lm, RA90, DIM	A	LEDS1929
800mm, 24V, LED, 18W, 4000K, 1695lm, RA90, DIM	A	LEDS1930
800mm, 24V, LED, 18W, 5000K, 1810lm, RA90, DIM	A	LEDS1931
1000mm, 24V, LED, 25W, 2700K, 1910lm, RA90, DIM	A	LEDS1932
1000mm, 24V, LED, 25W, 4000K, 2115lm, RA90, DIM	A	LEDS1933
1000mm, 24V, LED, 25W, 5000K, 2260lm, RA90, DIM	A	LEDS1934